

Official 2014 Latest Microsoft 70-412 Exam Dump Free Download(291-300)!

QUESTION 291 Hotspot Question Your network contains two Web servers named Server1 and Server2. Both servers run Windows Server 2012 R2. Server1 and Server2 are nodes in a Network Load Balancing (NLB) cluster. The NLB cluster contains an application named App1 that is accessed by using the URL <http://app1.contoso.com>. You deploy a new server named Server3 that runs Windows Server 2012 R2. The contoso.com DNS zone contains the records shown in the following table.

Record name	Record type
App1	A
Server1	A
Server2	A
Server3	A

You need to add Server3 to the NLB cluster. What command should you run? To answer, select the appropriate options in the answer area.

Answer Area

Get-NlbClusterNode

Get-NlbClusterNodeDip

Get-NlbClusterVip

App1

Server1

Server3

-NewNodeName Server3 -NewNodeInterface EtherNet

Add-NlbClusterNode

Add-NlbClusterNodeDip

Add-NlbClusterVip

Set-NlbClusterNodeDip

Answer:

Answer Area

Get-NlbClusterNode

Get-NlbClusterNodeDip

Get-NlbClusterVip

App1

Server1

Server3

-NewNodeName Server3 -NewNodeInterface EtherNet

Add-NlbClusterNode

Add-NlbClusterNodeDip

Add-NlbClusterVip

Set-NlbClusterNodeDip

QUESTION 292 Drag and Drop Question Your network contains an Active Directory domain named contoso.com. The domain contains four member servers named Server1, Server2, Server3, and Server4. All servers run Windows Server 2012 R2. Server1 and Server3 are located in a site named Site1. Server2 and Server4 are located in a site named Site2. The servers are configured as nodes in a failover cluster named Cluster1. Dynamic quorum management is disabled. Cluster1 is configured to use the Node Majority quorum configuration. You need to ensure that users in Site2 can access Cluster1 if the network connection between the two sites becomes unavailable. What should you run from Windows PowerShell? To answer, drag the appropriate commands to the correct location. Each command may be used once, more than once, or not at all. You may need to drag the split bar between panes or scroll to view content.

Commands

Get-ClusterNode Server1

Get-ClusterNode Server2

\$_NodeWeight = 0

\$_NodeWeight = 1

Answer Area

Command

Command

Answer:

Commands

Get-ClusterNode Server1

Get-ClusterNode Server2

\$_NodeWeight = 0

\$_NodeWeight = 1

Answer Area

Get-ClusterNode Server1

\$_NodeWeight = 0

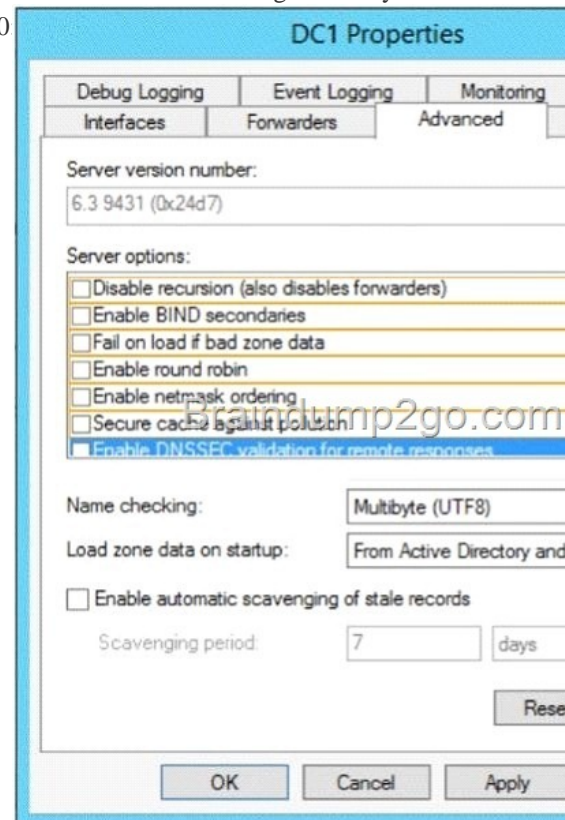
] QUESTION 293 Hotspot Question Your network contains an Active Directory domain named contoso.com. All domain controllers run Windows Server 2012 R2. The network has the physical sites and TCP/IP subnets configured as shown in the following table.

Site name	Network subnet
Site1	192.168.1.0/24
Site2	192.168.2.0/24
Site3	192.168.3.0/24

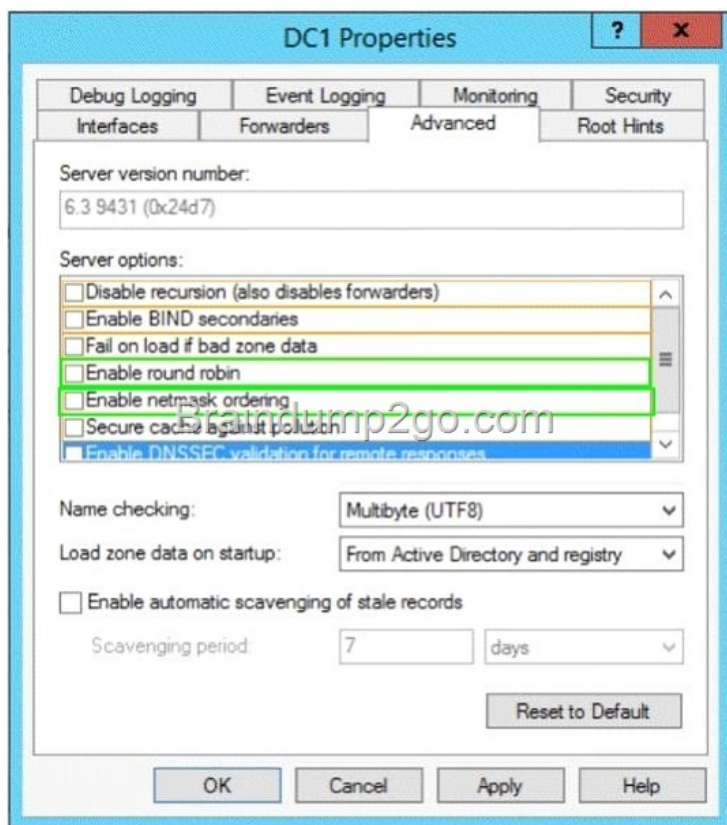
You have a web application named App1 that is hosted on six separate Web servers. DNS has the host names and IP addresses registered as shown in the following table.

Host name	Network address
App1.contoso.com	192.168.1.70
App1.contoso.com	192.168.1.71
App1.contoso.com	192.168.2.140
App1.contoso.com	192.168.2.141
App1.contoso.com	192.168.3.210
App1.contoso.com	192.168.3.211

You discover that when users connect to appl.contoso.com, they are connected frequently to a server that is not on their local subnet. You need to ensure that when the users connect to appl.contoso.com, they connect to a server on their local subnet. The connections must be distributed across the servers that host appl.contoso.com on their subnet. Which two settings should you configure? To answer, select the appropriate two settings in the answer area.



Answer: ;



QUESTION 294 You have a server named Server1. You install the IP Address Management (IPAM) Server feature on Server1. You need to provide a user named User1 with the ability to set the access scope of all the DHCP servers that are managed by IPAM. The solution must use the principle of least privilege. Which user role should you assign to User1?
A. IPAM Administrator Role B. IPAM DHCP Administrator Role
C. IPAM ASM Administrator Role D. DNS Record Administrator Role Answer: C

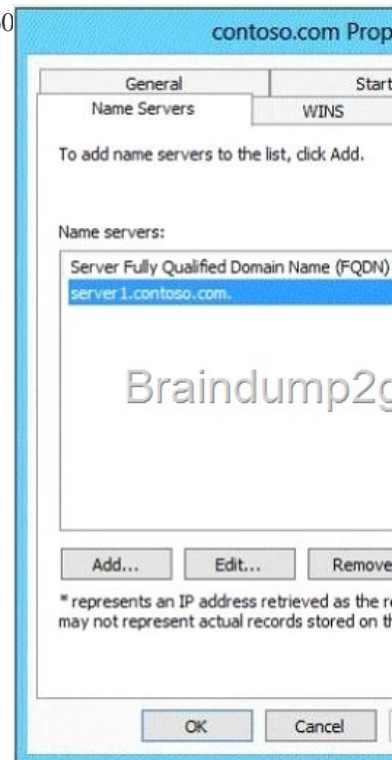
Explanation: IPAM ASM Administrators IPAM ASM Administrators is a local security group on an IPAM server that is created when you install the IPAM feature. Members of this group have all the privileges of the IPAM Users security group, and can perform IP address space tasks in addition to IPAM common management tasks. Note: When you install IPAM Server, the following local role-based IPAM security groups are created: IPAM Users IPAM MSM Administrators IPAM ASM Administrators IPAM IP Audit Administrators IPAM Administrators Incorrect: not A: Too much privileges. IPAM Administrators IPAM Administrators is a local security group on an IPAM server that is created when you install the IPAM feature. Members of this group have privileges to view all IPAM data and perform all IPAM tasks.

QUESTION 295 Your network contains an Active Directory domain named contoso.com. The domain contains two member servers named Server1 and Server2. You install the DHCP Server server role on Server1 and Server2. You install the IP Address Management (IPAM) Server feature on Server1. You notice that you cannot discover Server1 or Server2 in IPAM. You need to ensure that you can use IPAM to discover the DHCP infrastructure. Which two actions should you perform? (Each correct answer presents part of the solution. Choose two.) A. On Server2, create an IPv4 scope. B. On Server1, run the Add-IPAMServerInventory cmdlet. C. On Server2, run the Add-DhcpServerInDc cmdlet D. On both Server1 and Server2, run the Add-DhcpServerv4Policy cmdlet. E. On Server1, uninstall the DHCP Server server role. Answer: BC Explanation: The Add-IPAMServerInventory cmdlet adds a new infrastructure server to the IP Address Management (IPAM) server inventory. Use the fully qualified domain name (FQDN) of the server to add to the server inventory. The Add-DhcpServerInDC cmdlet adds the computer running the DHCP server service to the list of authorized Dynamic Host Configuration Protocol (DHCP) server services in the Active Directory (AD). A DHCP server service running on a domain joined computer needs to be authorized in AD so that it can start leasing IP addresses on the network.

QUESTION 296 Your network contains two Active Directory forests named contoso.com and corp.contoso.com.

Name
DC1.contoso.com
DCR21.contoso.com

User1 is a member of the DnsAdmins domain local group in contoso.com. User1 attempts to create a conditional forwarder to corp.contoso.com but receive an error message shown in the exhibit. (Click the Exhibit button.)

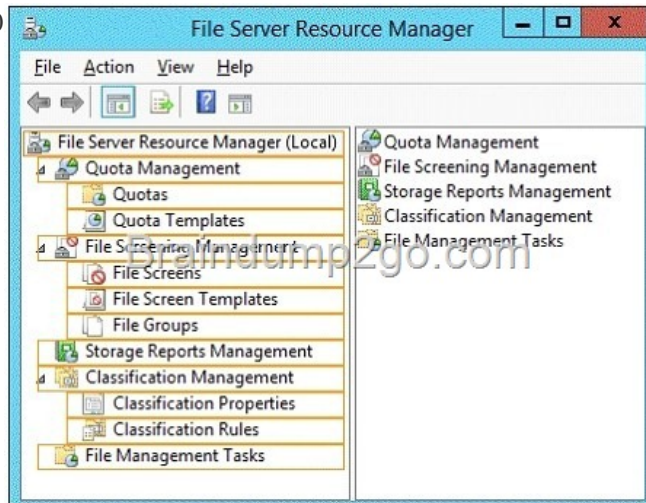


You need to configure bi-directional name resolution between the two forests. What should you do first?
 A. Add User1 to the DnsUpdateProxy group. B. Configure the zone to be Active Directory-integrated. C. Enable the Advanced view from DNS Manager. D. Run the New Delegation Wizard. Answer: A
 QUESTION 297 Your network contains two Active Directory forests named contoso.com and adatum.com. Each forest contains one domain. Contoso.com has a two-way forest trust to adatum.com. Selective authentication is enabled on the forest trust. Contoso contains 10 servers that have the File Server role service installed. Users successfully access shared folders on the file servers by using permissions granted to the Authenticated Users group. You migrate the file servers to adatum.com. Contoso users report that after the migration, they are unable to access shared folders on the file servers. You need to ensure that the Contoso users can access the shared folders on the file servers. What should you do?
 A. Disable selective authentication on the existing forest trust. B. Disable SID filtering on the existing forest trust. C. Run netdom and specify the /quarantine attribute. D. Replace the existing forest trust with an external trust. Answer: A
 QUESTION 298 You have a server named FS1 that runs Windows Server 2012 R2. You install the File and Storage Services server role on FS1. From Windows Explorer, you view the properties of a shared folder named Share1 and you discover that the Classification tab is missing. You need to ensure that you can assign classifications to Share1 from Windows Explorer manually. What should you do?
 A. From Folder Options, select Show hidden files, folders, and drives. B. From Folder Options, clear Use Sharing Wizard (Recommend). C. Install the File Server Resource Manager role service. D. Install the Enhanced Storage feature. Answer: C
 QUESTION 299 Your network contains two servers named Server1 and Server2 that run Windows Server 2012 R2. Server1 and Server2 are configured as shown in the following table.

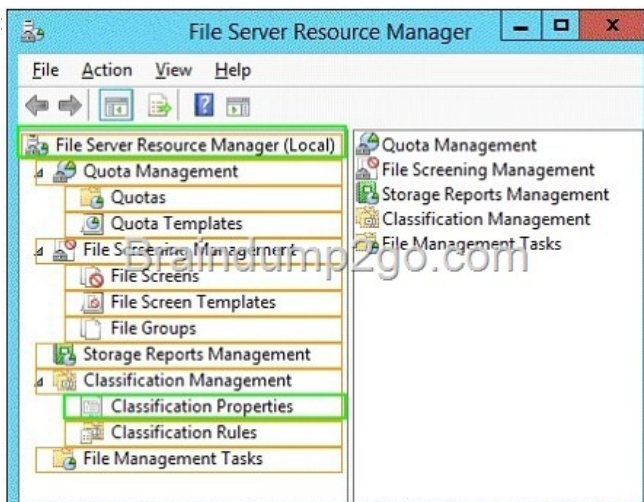
Server name	Installed component
Server1	iSCSI Target Server
Server2	iSNS server service

You need to ensure that when new targets are added to Server1, the targets are registered on Server2 automatically. What should you do on Server1?
 A. Configure the Discovery settings of the iSCSI initiator. B. Configure the security settings of the iSCSI target. C. Run the Set-Wmilnstance cmdlet. D. Run the Set-IscsiServerTarget cmdlet. Answer: C
 QUESTION 300 Hotspot Question You have a file

server named Server1 that runs Windows Server 2012 R2. Server1 contains a file share that must be accessed by only a limited number of users. You need to ensure that if an unauthorized user attempts to access the file share, a custom access-denied message appears, which contains a link to request access to the share. The message must not appear when the unauthorized user attempts to access other shares. Which two nodes should you configure in File Server Resource Manager? To answer, select the appropriate two nodes in the answer area.



Answer:



Passing Microsoft 70-412 Exam successfully in a short time! Just using Braindump2go's Latest Microsoft 70-412 Dump:
<http://www.braindump2go.com/70-412.html>