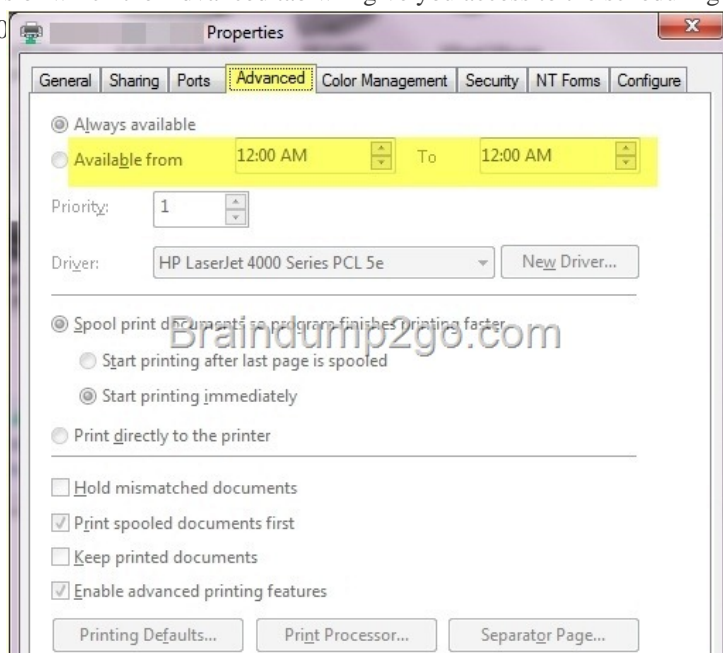


## Official 2014 Latest Microsoft 70-410 Exam Dump Free Download(271-280)!

**QUESTION 271** You are configuring the IPv6 network infrastructure for a branch office. The corporate network administrator allocates the 2001:DB8:0:C000::/58 address space for use in the branch office. You need to identify the maximum number of IPv6 subnets you can create. How many IPv6 subnets should you identify? A. 32 B. 64 C. 128 D. 1024 Answer: B Explanation: IPv6 has 128-bit (16-byte) source and destination IP addresses. Although 128 bits can express over  $3.4 \times 10^{38}$  possible combinations, the large address space of IPv6 has been designed for multiple levels of subnetting and address allocation from the Internet backbone to the individual subnets within an organization. <http://technet.microsoft.com/en-us/library/dd379516v=WS.10%29.aspx>

**QUESTION 272** You have a print server named Server1. You install a printer on Server1. You share the printer as Printer1. You need to configure Printer1 to be available only from 19:00 to 05:00 every day. Which settings from the properties of Printer1 should you modify? A. Device Settings B. Advanced C. Security D. Ports E. Sharing Answer: B Explanation: When navigating to the printer properties, the Properties tab is divided into several different tabs of which the Advanced tab will give you access to the scheduling where you can configure the availability of the printer.



**QUESTION 273** You have two servers named Server1 and Server2 that run Windows Server 2012 R2. Server1 has the DHCP Server server role installed. You need to create an IPv6 reservation for Server2. Which two values should you obtain from Server2? (Each correct answer presents part of the solution. Choose two.) A. the hardware ID B. the DHCPv6 unique identifier C. the DHCPv6 identity association ID D. the SMBIOS GUID E. the MAC address Answer: BC Explanation: The Add-DhcpServerv6Reservation cmdlet reserves a specified IPv6 address for the client identified by the specified Dynamic Host Configuration Protocol (DHCP) v6 unique identifier (ID) (DUID) and identity association ID (IAID). <http://technet.microsoft.com/en-us/library/jj590730.aspx>

**QUESTION 274** Hotspot Question You have two servers that run Windows Server 2012 R2. The servers are configured as shown in the following table.

Server name	Domain name or workgroup
Server1	Contoso.com
Server2	Workgroup

You need to ensure that Server2 can be managed by using Server Manager from Server1. In the table below, identify which actions must be performed on Server1 and Server2. Make only one selection in each row. Each correct selection is worth one point.

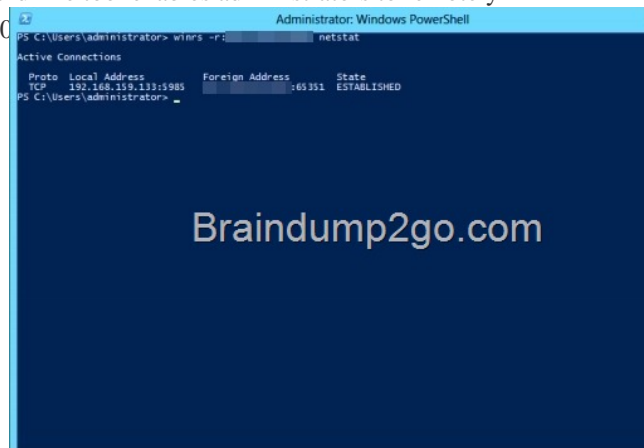
	Server1	Server2
Modify the TrustedHosts list.	<input type="radio"/>	<input type="radio"/>
Set the network profile to Private.	<input type="radio"/>	<input type="radio"/>
Override the User Account Control (UAC) restrictions by using the LocalAccountTokenFilterPolicy registry entry.	<input type="radio"/>	<input type="radio"/>

Answer: ☐

	Server1	Server2
Modify the TrustedHosts list.	<input type="radio"/>	<input checked="" type="radio"/>
Set the network profile to Private.	<input type="radio"/>	<input checked="" type="radio"/>
Override the User Account Control (UAC) restrictions by using the LocalAccountTokenFilterPolicy registry entry.	<input type="radio"/>	<input checked="" type="radio"/>

] QUESTION 275 Your network contains an Active Directory domain named contoso.com. The domain contains two member servers named Server1 and Server2 that run Windows Server 2012 R2. You log on to Server1. You need to retrieve a list of the active TCP connections on Server2. Which command should you run from Server1? A. ☐ winrm get server2 B. ☐ dsquery \* -scope base -attrip,server2 C. ☐ winrs -r:server2 netstat D. ☐ netstat> server2 Answer: C Explanation:

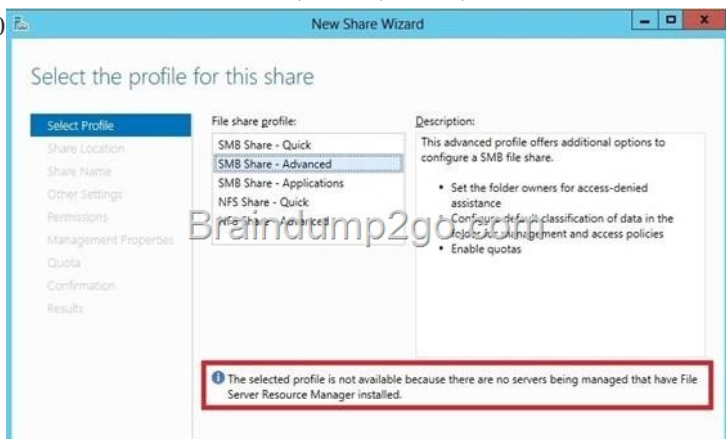
[http://msdn.microsoft.com/en-us/library/aa384291\(v=vs.85\).aspx](http://msdn.microsoft.com/en-us/library/aa384291(v=vs.85).aspx) This command line tool enables administrators to remotely execute most Cmd.exe commands using the WS-Management protocol. ☐



QUESTION 276 You have a server named Server1 that has the Print and Document Services server role installed. You need to provide users with the ability to manage print jobs on Server1 by using a web browser. What should you do? A. ☐ Start the Computer Browser service and set the service to start automatically. B. ☐ Install the LPD Service role service. C. ☐ Install the Internet Printing role service. D. ☐ Start the Printer Extensions and Notifications service and set the service to start automatically. Answer: C Explanation: Internet printing makes it possible for computers running Windows Server 2008 to use printers located anywhere in the world by sending print jobs using Hypertext Transfer Protocol (HTTP).

[http://technet.microsoft.com/en-us/library/cc731368\(v=ws.10\).aspx](http://technet.microsoft.com/en-us/library/cc731368(v=ws.10).aspx) QUESTION 277 Your network contains an Active Directory domain named contoso.com. The domain contains a server named Server1. Server1 runs Windows Server 2012 R2. You plan to create a shared folder. The shared folder will have a quota limit. You discover that when you run the New Share Wizard, you cannot select the SMB Share Advanced option. You need to ensure that you can use SMB Share - Advanced to create the new share. What should you do on Server1 before you run the New Share Wizard? A. ☐ Configure the Advanced system

settings. B. Run the Install-WindowsFeaturecmdlet. C. Run the Set-SmbSharecmdlet. D. Install the Share and Storage Management tool. Answer: B Explanation:



Install-windowsfeature -name fs-resource-manager -includemanagementtools Installs one or more Windows Server roles, role services, or features on either the local or a specified remote server that is running Windows Server 2012 R2. This cmdlet is equivalent to and replaces Add- WindowsFeature, the cmdlet that was used to install roles, role services, and features in Windows Server 2008 R2.

<http://www.c-sharpcorner.com/UploadFile/cd7c2e/how-to-install-the-file-server-resource-manager-in-windows-s/> QUESTION 278

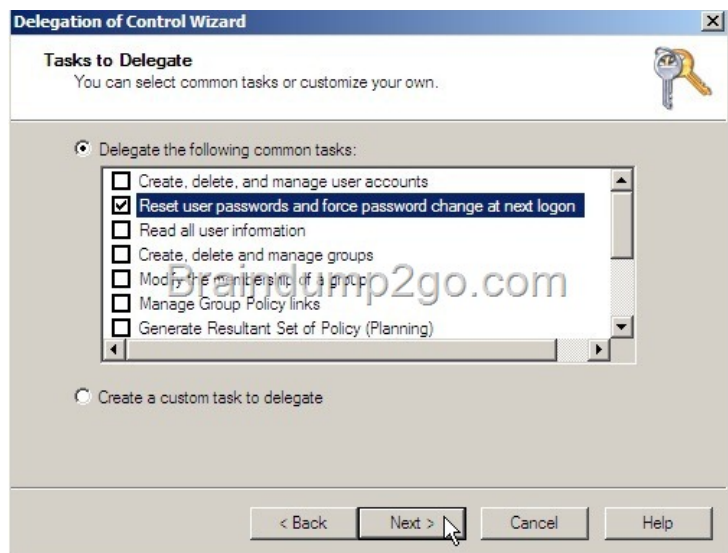
Your network contains two Active Directory forests named contoso.com and adatum.com. All servers run Windows Server 2012 R2. A one-way external trust exists between contoso.com and adatum.com. Adatum.com contains a universal group named Group1. You need to prevent Group1 from being used to provide access to the resources in contoso.com. What should you do?

A. Change the scope of Group1 to domain local. B. Modify the Allowed to Authenticate permissions in adatum.com. C. Enable SID quarantine on the trust between contoso.com and adatum.com. D. Modify the Allowed to Authenticate permissions in contoso.com. Answer: B

Explanation: \* Accounts that require access to the customer Active Directory will be granted a special right called Allowed to Authenticate. This right is then applied to computer objects (Active Directory domain controllers and AD RMS servers) within the customer Active Directory to which the account needs access. \* For users in a trusted Windows Server 2008 or Windows Server 2003 domain or forest to be able to access resources in a trusting Windows Server 2008 or Windows Server 2003 domain or forest where the trust authentication setting has been set to selective authentication, each user must be explicitly granted the Allowed to Authenticate permission on the security descriptor of the computer objects (resource computers) that reside in the trusting domain or forest. [http://technet.microsoft.com/en-us/library/cc816733\(v=ws.10\).aspx](http://technet.microsoft.com/en-us/library/cc816733(v=ws.10).aspx) QUESTION 279

Your network contains an Active Directory domain named contoso.com. The domain contains 100 user accounts that reside in an organizational unit (OU) named OU1. You need to ensure that a user named User1 can link and unlink Group Policy objects (GPOs) to OU1. The solution must minimize the number of permissions assigned to User1. What should you do? A. Add User1 to the Group Policy Creator Owners group. B. Run the Set-GPPermissioncmdlet. C. Modify the permission on the \Contoso.comSYSVOLContoso.comPolicies folder. D. Run the Delegation of Control Wizard on OU1. Answer: D Explanation:

<http://www.howtogeek.com/50166/using-the-delegation-of-control-wizard-to-assign-permissions-in-server-2008/> &#160;



QUESTION 280 Your network contains an Active Directory forest named contoso.com. The forest contains two domains named contoso.com and child.contoso.com and two sites named Site1 and Site2. The domains and the sites are configured as shown in following table. &#160;

Domain controller name	Domain name	Site name	Role
DC1	Contoso.com	Site1	Global catalog RID master PDC emulator
DC2	Contoso.com	Site1	Domain naming master Schema master Infrastructure master
DC3	Child.contoso.com	Site1	Infrastructure master RID master PDC emulator
DC4	Child.contoso.com	Site2	Not applicable

When the link between Site1 and Site2 fails, users fail to log on to Site2. You need to identify what prevents the users in Site2 from logging on to the child.contoso.com domain. What should you identify? A.&#160;&#160;&#160; the placement of the global catalog server B.&#160;&#160;&#160; the placement of the PDC emulator C.&#160;&#160;&#160; the placement of the infrastructure master D.&#160;&#160;&#160; the placement of the domain naming master Answer: B Explanation:

[http://technet.microsoft.com/en-us/library/dd391870\(v=ws.10\).aspx](http://technet.microsoft.com/en-us/library/dd391870(v=ws.10).aspx) The PDC emulator processes password changes from earlier-version clients and other domain controllers on a best-effort basis; handles password authentication requests involving passwords that have recently changed and not yet been replicated throughout the domain; and, by default, synchronizes time. If this domain controller cannot connect to the PDC emulator, this domain controller cannot process authentication requests, it may not be able to synchronize time, and password updates cannot be replicated to it.

[http://technet.microsoft.com/en-us/library/cc773108\(v=ws.10\).aspx](http://technet.microsoft.com/en-us/library/cc773108(v=ws.10).aspx) The PDC emulator master processes password changes from client computers and replicates these updates to all domain controllers throughout the domain. At any time, there can be only one domain controller acting as the PDC emulator master in each domain in the forest. Passing Microsoft 70-410 Exam successfully in a short time! Just using Braindump2go's Latest Microsoft 70-410 Dump: <http://www.braindump2go.com/70-410.html>