

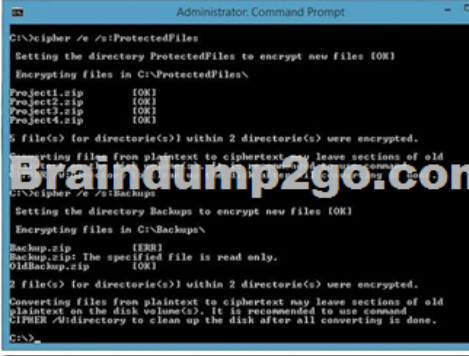
## [Aug.-2016-NEWBraindump2go Microsoft 138Q&As 70-697 VCE and PDF Exam Dumps[NQ1-NQ5 Share

2016.08 Microsoft New 70-697: Configuring Windows Devices Exam Questions Released! Free Instant Download New 70-697 Exam Dumps(PDF & VCE) from Braindump2go.com Today!100% Real Exam Questions! 100% Exam Pass Guaranteed!NEW QUESTION 1 - NEW QUESTION 5: 1.|2016.08 New Microsoft 70-697 Exam Dumps(PDF & VCE) 138Q&As:<http://www.braindump2go.com/70-697.html>2.|2016.08 New Microsoft 70-697 Exam Questions & Answers:<https://drive.google.com/folderview?id=0B75b5xYLjSSNMHZoZGJxbElJbFU&usp=sharing> QUESTION 1 You administer a Windows 10 Enterprise computer that runs Hyper-V. The computer hosts a virtual machine with multiple snapshots. The virtual machine uses one virtual CPU and 512 MB of RAM. You discover that the virtual machine pauses automatically and displays the state as paused-critical. You need to identify the component that is causing the error. Which component should you identify? A. no virtual switch defined B. insufficient memory C. insufficient hard disk space D. insufficient number of virtual processors Answer: C Explanation: In this question, the VM has "multiple snapshots" which would use up a lot of disk space. Virtual machines will go into the "Paused-Critical" state in Hyper-V if the free space on the drive that contains the snapshots goes below 200MB. One thing that often trips people up is if they have their virtual hard disks configured on one drive - but have left their snapshot files stored on the system drive. Once a virtual machine snapshot has been taken - the base virtual hard disk stops expanding and the snapshot file stores new data that is written to the disk - so it is critical that there is enough space in the snapshot storage location. Incorrect Answers: A: No virtual switch being defined would not cause the Pause-Critical state. B: Insufficient memory would not cause the Pause-Critical state. D: An insufficient number of virtual processors would not cause the Pause-Critical state. [http://blogs.msdn.com/b/virtual\\_pc\\_guy/archive/2009/04/22/why-is-my-virtual-machine-paused-critical-hyper-v.aspx](http://blogs.msdn.com/b/virtual_pc_guy/archive/2009/04/22/why-is-my-virtual-machine-paused-critical-hyper-v.aspx) QUESTION 2 You have a Microsoft Intune subscription. You have three security groups named Security1, Security2 and Security3. Security1 is the parent group of Security2. Security2 has 100 users. You need to change the parent group of Security2 to be Security3. What should you do first? A. Edit the properties of Security1. B. Edit the properties of Security2. C. Delete security2. D. Remove all users from Security2. Answer: C Explanation: You cannot change the parent group of a security group in Microsoft Intune. You can only delete the group and recreate another group with the correct parent. Deleting a group does not delete the users that belong to that group. Therefore, you do not need to remove the users from the group; you can just delete the group and recreate it. Incorrect Answers: A: You cannot change the parent of a group by modifying the properties of the parent group. B: You cannot change the parent of a group by modifying the properties of the group. D: Deleting a group does not delete the users that belong to that group. Therefore, you do not need to remove the users from the group; you can just delete the group and recreate it. <https://technet.microsoft.com/en-gb/library/dn646990.aspx> QUESTION 3 A company has 10 portable client computers that run Windows 10 Enterprise. The portable client computers have the network connections described in the following table.

Network name	Connection type
CorpWired	Wired
CorpWifi	Wireless
HotSpot	Public hotspot

None of the computers can discover other computers or devices, regardless of which connection they use. You need to configure the connections so that the computers can discover other computers or devices only while connected to the CorpWired or CorpWifi connections. What should you do on the client computers? A. For the CorpWifi connection, select Yes, turn on sharing and connect to devices. B. Turn on network discovery for the Public profile. C. Change the CorpWired connection to public. Turn on network discovery for the Public profile. For the HotSpot connection, select No, don't turn on sharing or connect to devices. D. For the CorpWired connection, select Yes, turn on sharing and connect to devices. E. Turn on network discovery for the Private profile. Answer: C Explanation: Of the answers given, this is the only single answer that meets the requirements. Network discovery is a network setting that affects whether your computer can see (find) other computers and devices on the network and whether other computers on the network can see your computer. By default, Windows Firewall blocks network discovery, but you can enable it. When we change the CorpWired connection to public, all networks will be in the Public profile. Enabling network discovery for the Public profile will enable the computers to see other computers on each network (including HotSpot). To prevent network discovery on the HotSpot network, we can select No, don't turn on sharing or connect to devices for that network. This will disable Network discovery for the computer's connection to the HotSpot network. Incorrect Answers: A: This solution would enable network discovery for the CorpWifi network, but not the CorpWired network. B: This solution would enable network discovery for the CorpWifi and HotSpot networks, but not the CorpWired network. D: This solution would enable network discovery for the CorpWired network, but not the CorpWifi network. E: This solution would enable network discovery for the CorpWired network, but not the CorpWifi

network. QUESTION 4Hotspot QuestionYour company upgrades a research and development department workstation to a Windows 10 Enterprise computer. Two of the workstation's folders need to be encrypted. The folders are named C:\ProtectedFiles and C:\Backups.You attempt to encrypt the folders. The output is shown in the following exhibit.



Use the drop-down menus to select the answer choice that completes each statement.NOTE: Each correct selection is worth one point.

Answer Area

The attempt to encrypt the ProtectedFiles folder and files [answer choice]

The attempt to encrypt the Backups folder and files [answer choice]

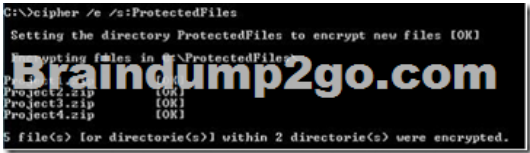
Answer:

Answer Area

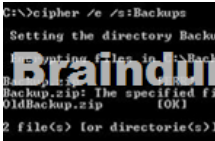
The attempt to encrypt the ProtectedFiles folder and files [answer choice]

The attempt to encrypt the Backups folder and files [answer choice]

Explanation:We can see from the image below that all files and the ProtectedFiles folder were encrypted successfully (There are no errors and there is an [OK] message for each action).



The image below shows that the folder was encrypted successfully (Setting the directory Backups to encrypt new files [OK]).The file Backup.zip failed to encrypt because the file is read only. The other file, OldBackup.zip was encrypted successfully.



<https://technet.microsoft.com/en-us/library/bb490878.aspx> QUESTION 5You have a computer named Computer1 that runs Windows 10 Enterprise. You add a 1 TB hard drive and create a new volume that has the drive letter D.You need to limit the amount of space that each user can consume on D: to 200 GB. Members of the Administrators group should have no limit.Which three actions should you perform? Each correct answer presents part of the solution. A. Run fsutil quota violations D:.B. Enable the Deny disk space to users exceeding quota limit setting.C. Enable the Enable Quota Management setting.D. Set a default quota limit.E. Run convert D: /FS:NTFS.F. Add a quota entry. Answer: BCDEExplanation:To limit the amount of space that each user can consume, you should enable the Enable Quota Management setting, and then enter the appropriate values in the Limit Disk Space To text box and the Set Warning Level To text box, and then select the Deny Disk Space To Users Exceeding Quota Limit check box to enforce identical quota limits for all users.Incorrect Answers:A: The fsutil quota violations D: command will search the system and application logs and display a message to indicate that quota violations have been detected or that a user has reached a quota threshold or quota limit. It will not, however, set the quota limit.E: The convert D: /FS:NTFS command will convert the volume to NTFS. It will not set the quota limit.F: A default quota entry exists for administrators so answer F is not required.

<https://technet.microsoft.com/en-us/library/dd277427.aspx><https://technet.microsoft.com/en-us/library/cc788136.aspx>

<https://technet.microsoft.com/en-us/library/bb490885.aspx> !!!RECOMMEND!!! 1.Braindump2go|2016.08 New Microsoft 70-697 Exam Dumps(PDF & VCE) 138Q&As: <http://www.braindump2go.com/70-697.html> 2.Braindump2go|2016.08 New Microsoft 70-697 Exam Questions & Answers: <https://drive.google.com/folderview?id=0B75b5xYLjSSNMHZoZGJxbElJbFU&usp=sharing>